

AIR TASKING ORDER - RESTRICTED ACCESS

1. SITUATION

1630 Local, 30 March 2012, Persian Gulf

BACKGROUND

Our attack in the early morning resulted in successful control of the Bushehr Power Plant Complex (BPPC) by SOCOM forces, at the cost of 5 KIA and 12 WIA. On our initial push in, Tomcats successfully held off 8 enemy fighters scrambled from Bushehr and Shiraz, while medium and long range SAMs around Bushehr were jammed by our Growlers, then suppressed and destroyed by Hornets according to plan. Our CAS Hornets also destroyed the BPPC's SHORAD and known gate guard locations. After the SEAL teams deployed, they were ambushed by Iranian APCs apparently secretly hidden in buildings at the facility, and inflicted most of our casualties. Hornets destroyed these APCs and, after Ranger deployments, provided additional suppressive 20mm fire as Rangers closed in on the reactor buildings. Rangers secured the BPPC perimeter about the time CSG-8 was relieved by Air Force flights (Enfield 1 and 2). Critically, we avoided any damage to buildings in the Reactor Zone.

As we rested, F-15Es have been on station while SOCOM troops swept the BPPC to secure all buildings. There has been no hostile fire in the area, and no significant troop movements toward Bushehr. Although Iran's military is surely aware that we have attacked Bushehr, we believe they are more worried about our ongoing air strikes to the north against its thicker IADS around Isfahan and Arak. It is also unclear whether they realize US troops are actually on the ground holding the BPPC. For now, Iranian ground forces are postured to stop a ground invasion from Iraq and to bog down an amphibious invasion in the Zagros Mountains.

OVERVIEW & COMMANDER'S INTENT

Part of CSG-8 will continue to be tasked with providing air cover for the BPPC. The primary concern for Bushehr is currently smaller guerilla attacks. We expect Iran might make a potentially significant ground counterattack on Bushehr, but also that we will have some significant notice should they make such a move. Aside from small covert special operations to the north and east, the BPPC represents our most significant ground presence in the country, as it is the only piece of Iranian territory we are openly holding for any significant length of time. As day breaks (and our presence becomes obvious), the State Department will communicate to the Iranians via the Swiss embassy that our ground troops are holding the BPPC for the sole purpose of removing the fuel rods. The intention is to limit escalation (by clarifying we do not intend a larger ground invasion) and prevent them from damaging the fuel rods in a counter attack. In the event of a large-scale counterattack, we expect surveillance to detect significant ground forces coming west out of the mountains at least 70 minutes prior to them

AIR TASKING ORDER - RESTRICTED ACCESS

reaching artillery range for Bushehr, enough time to scramble a large strike aircraft presence over the area. Nonetheless, the BPPC needs continuous protection from smaller scale attacks.

We are especially on the lookout for MANPADs in the area attacking helos continuously bringing in equipment and personnel. We also cannot rule out, say, mortar attacks on the facility by enemy forces hidden in the surrounding towns, or a light arms attack on the front gates. Our objectives are:

1. To keep the BPPC and all helos traveling in and out of it safe.
2. Minimize civilian casualties, and especially avoid any damage to the reactor and buildings in the reactor zone.
3. Avoid escalation not needed to protect the BPPC.

WEATHER: 24C, Mostly Clear, Wind 157 @ 6kt. Altimeter 29.98.

ENEMY FORCES

Medium and long range SAM threat plus IRIAF fighters around Bushehr have been neutralized. We believe there are still at least 8 possible F-4s at Shiraz Air Base, 100 nm to the northeast, that could be scrambled. Significant armor and artillery ground forces are in the mountains around Shiraz, but we do not expect them to be a factor for this mission (should they move toward Bushehr, a large strike force from CSG-8 and Al Udeid will be scrambled).

Actual ground forces near Bushehr are unknown, but we are primarily concerned with MANPADs, SHORAD, and small infantry or vehicle groups that may be hidden in the surrounding areas west of the nearby mountains.

FRIENDLY FORCES

Fixed wing assets in the AO:

- Ford 5 (3 F-14s): CAP orbiting 30 NM east of Bullseye
- **You:** Dodge 5 (3 F/A-18s): X-CAS orbiting over Bullseye
- Texaco (KC-135 MPRS): orbiting 30 NM west of Bullseye, providing tanker support
 - Chevy 2 (2 E/A-18s): escorting Texaco and providing EA support
 - Ford 4 (2 F-14s): escorting Texaco

Helo flights:

- Colt 6 (2 CH-47s): orbiting 8 NM southeast of BPPC, providing CSAR support
- Springfield 5 (3 CH-47s): bringing troops, engineers and supplies to the BPPC

C&C over Bushehr:

- Pontiac 1-1 (MQ-9): orbiting Angels 25 over Bullseye, providing C&C + JTAC if needed

AIR TASKING ORDER - RESTRICTED ACCESS

- Firefly: Bushehr ground forces control, will coordinate if needed with Pontiac

You will be relieved by Enfield 4 (3 F-16s) and Enfield 5 (3 F-15s).

ATTS/DETS

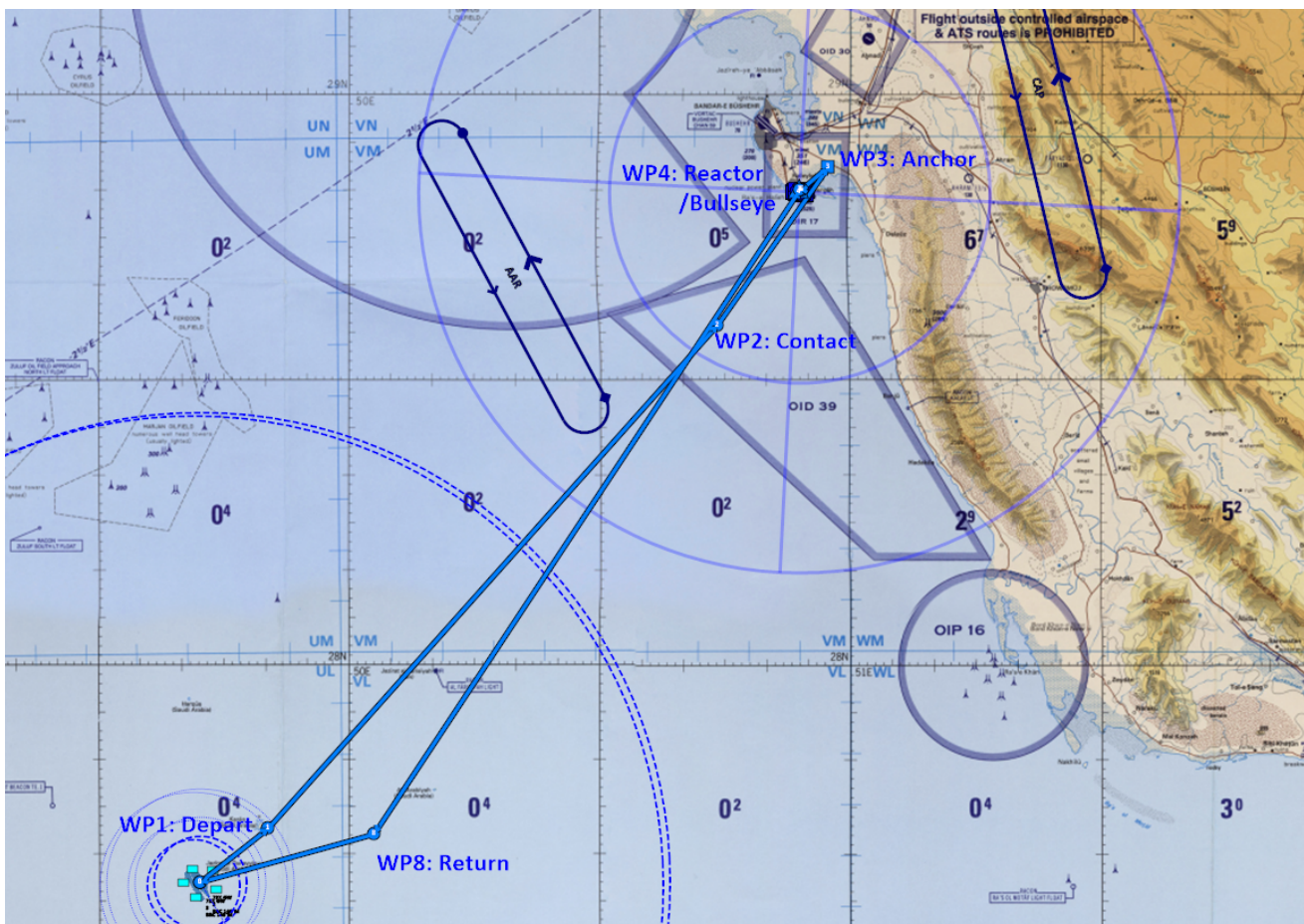
- Tanker: Texaco (30Y / 230 MHz)
- AWACS: Magic (263 MHz)

2. MISSION

Dodge 5 is tasked with X-CAS to protect the BPPC from ground threats in the vicinity. Establish orbit over the BPPC and follow tasking from Pontiac until relieved.

3. EXECUTION

Fig. 1: Flight Plan Overview



AIR TASKING ORDER - RESTRICTED ACCESS

1. Dodge 5 will launch from CVN-73 by 1355Z and head direct to WP 1, forming up and climbing to Angels 24

2. After WP1 head to WP 2, adjusting speed to arrive by 1409Z. At WP 2, push TAC 1 freq 263.0 and contact Pontiac. Maintain Angels 24 enroute (to deconflict with Texaco's orbit at Angels 20 and Pontiac's orbit at 25). Use this time en route to start your FLIR and set laser code.

2. After passing WP 2, descend to a CAS orbit over WP 3 and BPPC / Bullseye (WP 4), awaiting tasking from Pontiac. Altitude is your discretion but maintain at or above Angels 17 when possible to avoid MANPADs and deconflict with Pontiac who will be at Angels 25. When possible remain to the west of the mountains about 20 NM to the east of the BPPC to avoid drawing Iranian attention. Conserve fuel when able.

Maintain situational awareness of the BPPC facility and strict adherence to the ROE below. In particular, DO NOT damage any buildings in the Reactor Zone (WP2), even if a hostile breach of the BPPC occurs. Familiarize yourself with the recon photo (Fig. 3) and map (Fig. 4) of the BPPC.

As a precaution around the Reactor Zone, **remain FENCED OUT while orbiting over BPPC at or above Angels 17. Then FENCE IN when:**

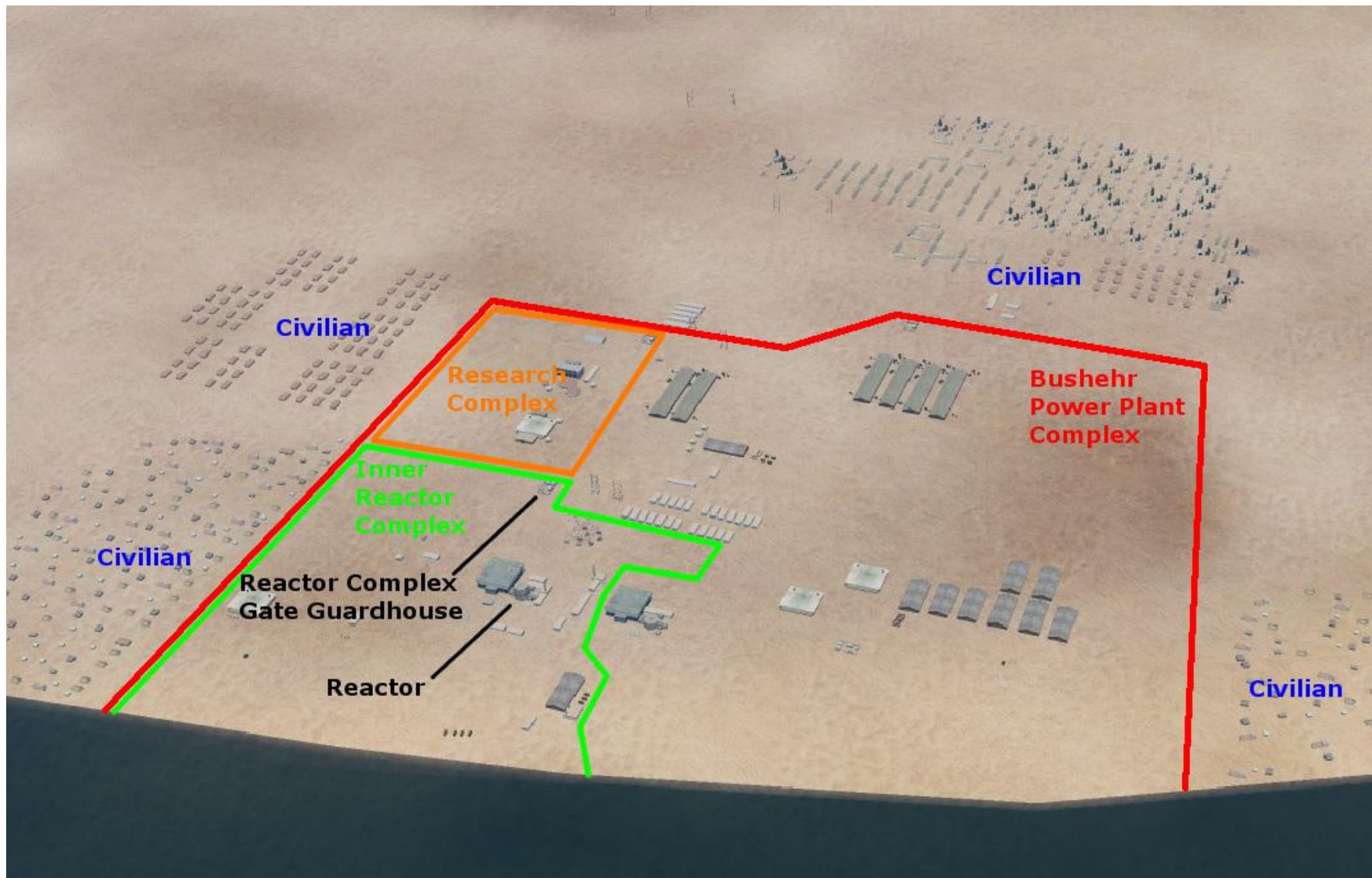
(a) you are engaged, or

(b) you are ordered to engage or otherwise move away from BPPC by Pontiac.

If you become Winchester or need to refuel, alert Pontiac (via the F10 menu).

AIR TASKING ORDER - RESTRICTED ACCESS

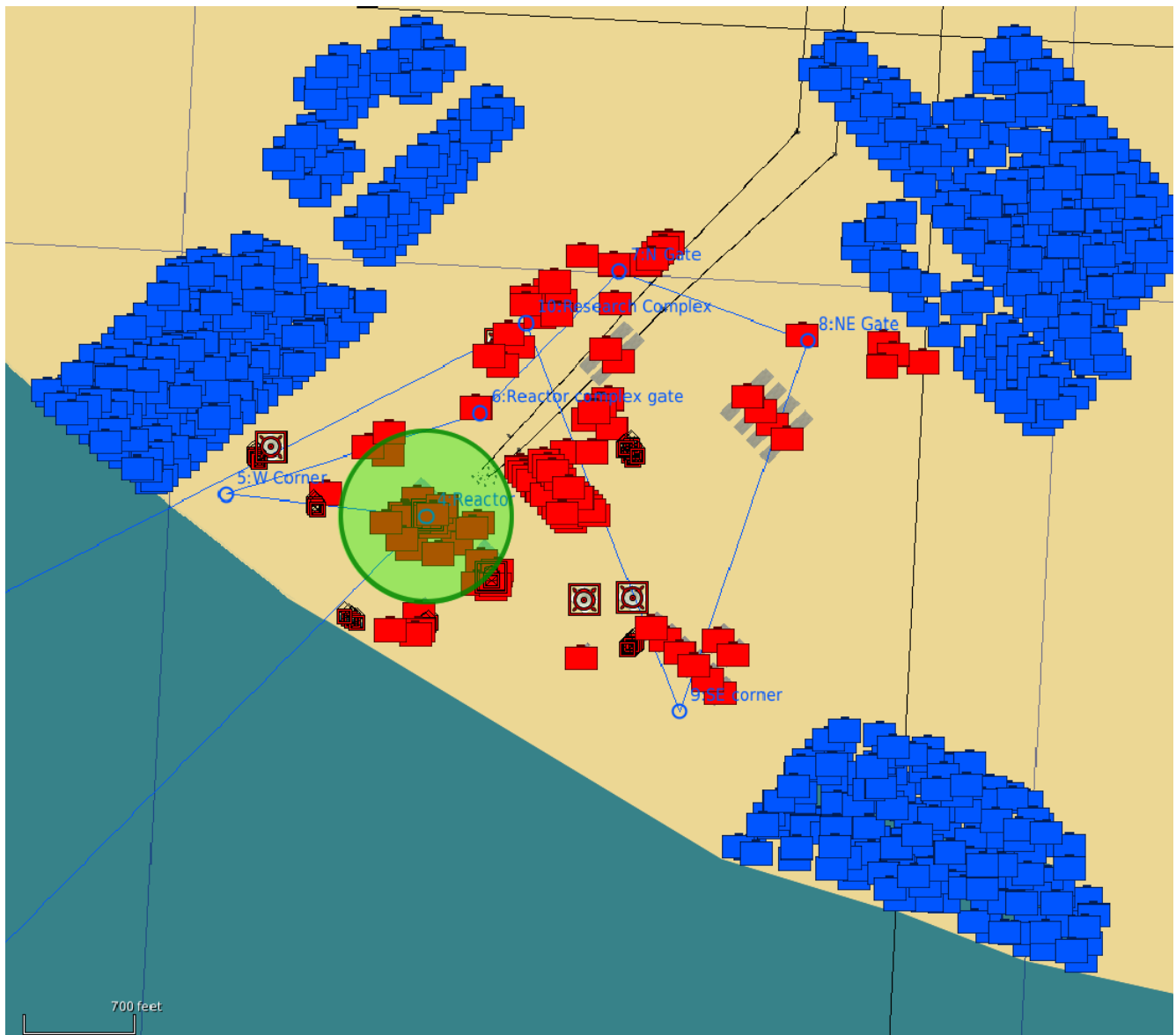
Fig. 3: Recon photo of BPPC



AIR TASKING ORDER - RESTRICTED ACCESS

Civilian structures surrounding the BPPC are in blue; structures of the BPPC itself are in red. The 500 ft radius “Reactor Zone” is marked in green, where explosive weapons are strictly prohibited.

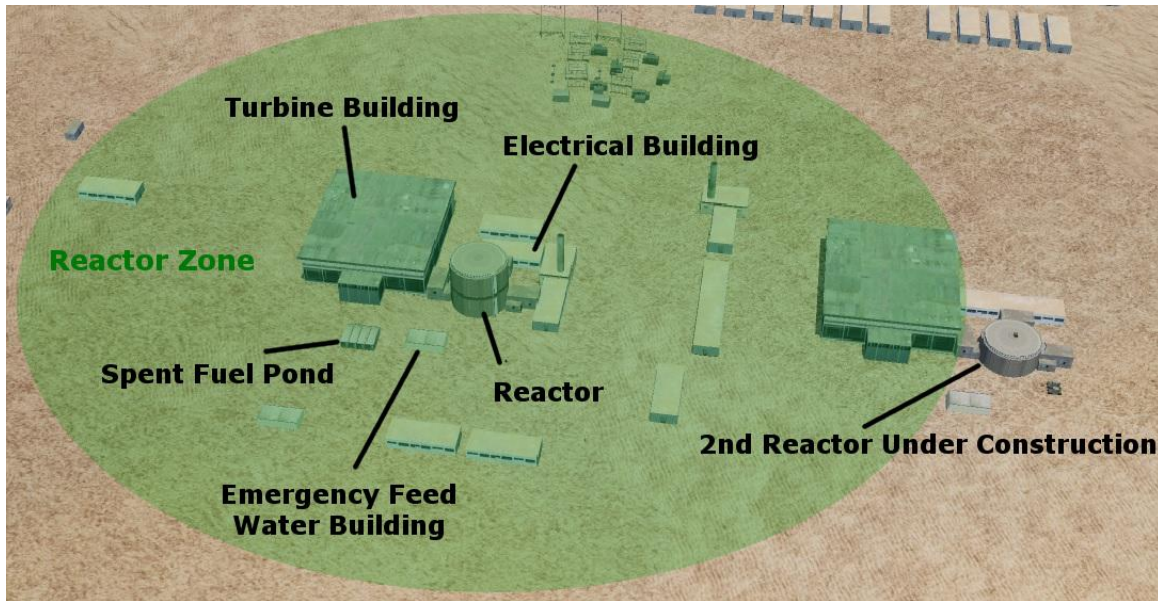
Fig. 4: Map of BPPC, waypoints and Reactor Zone



IT IS ABSOLUTELY CRITICAL TO FOLLOW ROE IN THE REACTOR ZONE. EXPLOSIVE WEAPONS ARE STRICTLY PROHIBITED WITHIN THE REACTOR ZONE, AND ANY USE OF 20MM CANNON MUST FOLLOW STRICT PROCEDURE IN ROE BELOW TO AVOID STRIKING BUILDINGS. See Fig. 5 for a photo of some of the main buildings within the Reactor Zone critical to keep unharmed.

AIR TASKING ORDER - RESTRICTED ACCESS

Fig. 5: Buildings in Reactor Zone



3. You will be relieved by Enfield 4 (3 F-16s) and Enfield 5 (3 F-15s). **Dodge 5 and Ford 5 will RTB when ordered by Pontiac, depending on conditions. At that point, FENCE OUT and fly to WP 7 or direct CVN-73.**

RULES OF ENGAGEMENT

- **A/A: Weapons Tight**

EID matrix:

1) Lack of friendly IFF and 2) NCTR

1) VID (Visual ID)

1) Lack of friendly IFF and 2) AWACS declared Bandit

- **A/G: Weapons Hold, except as cleared below.**

Damage to the Bushehr reactor or reactor-connected buildings (see Fig. 3, 4 and 5) could cause a Chernobyl-like disaster spreading radioactive fallout across nearby civilian areas in Iran and neighboring countries as far as the UAE. This could be a humanitarian disaster and may be considered a war crime.

- Dodge 5:

- **OUTSIDE the Reactor Zone (beyond 500 ft from WP4).** Dodge 5 is cleared to engage targets specifically ordered by Pontiac.

- **INSIDE the Reactor Zone (within 500 ft of WP4).** Dodge 5 is only cleared to engage targets designated by Pontiac using 20 mm, and must be within all of the following parameters:

- a) Close enough to get an “IN RNG” cue

- b) Must obey attack heading cleared by Pontiac, and attack runs must not cross the reactor building itself (WP4), the buildings they are directly connected to, or the spent fuel pond (see Fig. 5).

- c) Target must be sufficiently separated from any buildings to fully ensure bullets do not stray into them.

AIR TASKING ORDER - RESTRICTED ACCESS

4. ADMINISTRATION/LOGISTICS

Launch Time: 1345Z, 30 March 2012

Recovery Window: 1500Z - 1700Z

ARMAMENTS:

- Ford 5: 4*AIM-54, 2*AIM-7, 2*AIM-9
- Dodge 5: 4*GBU-12, 2*AGM-65E
- Chevy 2: 2*AGM-88C, 2*AIM-120
- Ford 4: 4*AIM-54, 2*AIM-7, 2*AIM-9

AIR REFUELING: Texaco will orbit 30 NM off the Iranian coast.

EW/ELINT: Magic will orbit over CVN-73 for ABM. Chevy 2 will provide EA over the AO if needed.

5. COMMANDER/SIGNAL

SIGNAL:

COMM 1:				COMM 2:		
Name	Preset	Freq		Name	Preset	Freq
Dodge 5	1	145		Tac 1	1	263
Texaco	2	230		Texaco	2	230
CVN-73	3	127.5		CVN-73	3	127.5

COMMAND: Commander CVW-1, CSG-8

AIR TASKING ORDER - RESTRICTED ACCESS

SUMMARY

Launch Time: 1345Z, March 30, 2012

Recovery Window: 1500Z - 1700Z

Joker: 5000. **Bingo:** 4000.

BULLSEYE: WP2, BPPC Reactor (N 28° 49.75', E 50° 53.29)

TARGET: Threats to BPPC

AIR THREAT: Bandits from Shiraz

AA THREAT: MANPADS, AAA

WEAPONS HOLD EXCEPT AS BRIEFED

NOTES: Use JHMCS (no need for NVGs by the time you arrive on station)

Carriers	Tankers	Support
-- USS George Washington -- 127.5 MHz AM TACN: 73X GW ICLS: 3	-- Texaco -- TEX 30X 230.0 MHz AM	-- AWACS -- 263.0 MHz AM Magic

AIR TASKING ORDER - RESTRICTED ACCESS

WP	Name	Remarks	Angels	Speed
1	Depart	Form up and climb to Angels 24 at WP1 or en route to WP2	24	
2	Contact	Contact Pontiac	24	As needed to arrive at 1409Z
3	Anchor	Descend to CAS orbit at or above Angels 17. Maintain orbit (tanking as needed) until cleared RTB by Pontiac.	17	
4	Reactor / Bullseye	Reference. RESPECT ROE		
5	N Gate	Reference		
6	NE Gate	Reference		
7	Research Complex	Reference		
8	Return	FENCE OUT	20	